

**TTE**  
TRUCK & TRAILER EQUIPMENT



# THE FUTURE IS ELECTRIC.



**EV CABLES  
AVAILABLE NOW.**

Committed to keeping  
your fleet moving

[trucktrailerequip.co.uk](http://trucktrailerequip.co.uk)

# THE FUTURE IS NOW.

**TTE**  
TRUCK & TRAILER EQUIPMENT

Explore our brand new range of Electric Vehicle (EV) charging cables. TUV Certified & IP54 rated to support drivers in an ever growing EV market. Our EV cables come in both single-phase and 3-phase applications, and is supplied with a handy storage carry case – another reason to choose Apec.

- Single-phase: operating voltage up to 240VAC
- 3-phase: operating voltage up to 415VAC
- 5 metre (16 ft) length, with an additional 5 metre extension option
- Operating temperature -30°C to 50°C
- Tested to 2,500 VDC
- IEC, TUV, UKCA and CE certified
- Supplied with storage case for safe transportation
- High-quality polycarbonate (PC) handle with copper alloy contacts
- Suitable for most electric vehicles
- Waterproof to IP54



**DID YOU KNOW?**  
Global EV sales up

**108%**  
from 2020 to 2021\*

\*Data sourced from SMMT.co.uk and correct at time of printing.

**54.8%**

of car parc will be  
new plug-in cars  
by 2035\*\*

\*\*Data sourced from ev-volumes.com and correct at time of printing.

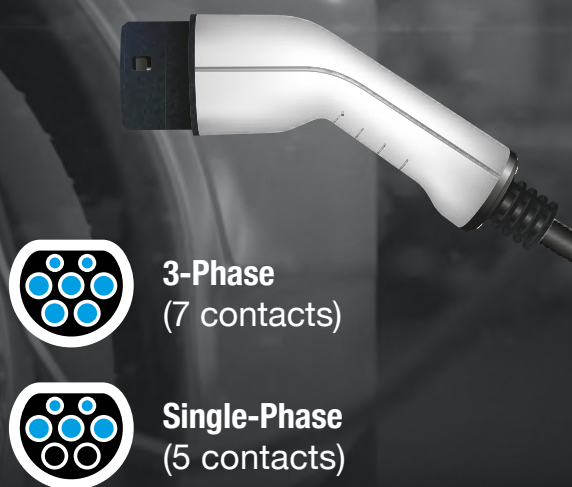
# WE'VE GOT YOUR TYPE.

**TTE**  
TRUCK & TRAILER EQUIPMENT

## TYPE 1.



## TYPE 2.



- 5 charging pins
- Manual locking catch.  
Can be unlocked by anyone
- Only single-phase
- Common on Japanese, Asian  
and US vehicles

- 5 or 7 charging pins
- No manual lock, locking pin keeps  
it in place. Can only be unlocked  
by owner/user
- Built in resistors to tell the vehicle  
the status of the charging process
- Available as single-phase and  
3-phase for rapid charges
- Industry standard for UK and  
European made vehicles



# YOU'VE GOT THE POWER.

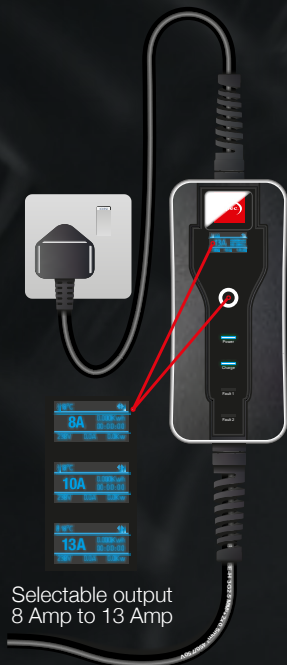
**TTE**  
TRUCK & TRAILER EQUIPMENT

## DO I NEED A 16 AMP OR 32 AMP EV CHARGING CABLE?

With 16 Amp cables charging at a much slower rate, and the majority of modern charging stations being 32 Amp, it is much more cost effective to use a 32 Amp cable. 32 Amp charging cables can even be used in a 16 Amp charger meaning you do not need multiple cables depending on the outlet Amp.

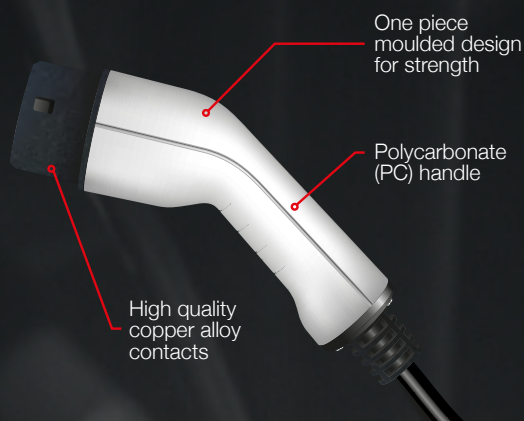


## CONTROLLER



Selectable output  
8 Amp to 13 Amp

## HOUSING

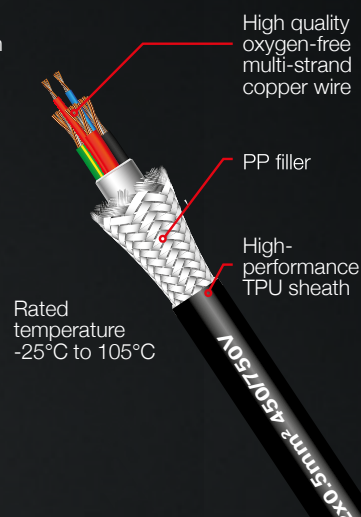


One piece  
moulded design  
for strength

Polycarbonate  
(PC) handle

High quality  
copper alloy  
contacts

## CABLE



High quality  
oxygen-free  
multi-strand  
copper wire

PP filler

High-  
performance  
TPU sheath

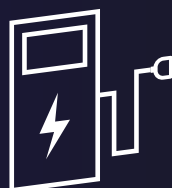
Rated  
temperature  
-25°C to 105°C

# SINGLE-PHASE OR 3-PHASE CABLE?



## DOMESTIC PROPERTY

**Usually single-phase supply:**  
Only single-phase cable required  
to charge EV's at home.



## PUBLIC CHARGING POINT

**Usually 3-phase supply:**  
3-phase cable is  
recommended.

**Note:** 3-Phase EV cables can be used in both a single-phase and 3-phase charger. A single-phase 32 amp charger will charge at 7.4kw per hour. A 3-phase 32 amp charger will charge at 22kW per hour (3 x faster). The speed your electric vehicle charges at depends on the vehicle's onboard charger. Check vehicle manufacturer specifications for details.

**TTE**  
TRUCK & TRAILER EQUIPMENT

# AEC

## –101–



**Type 2 Female  
to Type 2 Male**



Audi, BMW, Hyundai, Jaguar, KIA, Lucid Air, Mercedes, Mini, Nissan Leaf 2018, Porsche, Range Rover P400e, Renault, Smart, Tesla, Toyota, Volkswagen, Volvo

# AEC

## –102–



**Type 1 Female  
to Type 2 Male**



Citroen C-Zero, Ford Focus Electric, Kia Soul EV, Mitsubishi I-MIEV, Mitsubishi Outlander PHEV, Nissan e-NV200 Combi, Nissan Leaf 2012 - 2017, Peugeot iOn, Renault Fluence, Toyota Prius, Vauxhall Ampera

# AEC

## –103–



**Type 2 Female  
to UK Plug  
(with controller)**



Audi, BMW, Hyundai, Jaguar, KIA, Lucid Air, Mercedes, Mini, Nissan Leaf 2018, Porsche, Range Rover P400e, Renault, Smart, Tesla, Toyota, Volkswagen, Volvo

# AEC

## –104–



**Type 1 Female  
to UK Plug  
(with controller)**



Citroen C-Zero, Ford Focus Electric, Kia Soul EV, Mitsubishi I-MIEV, Mitsubishi Outlander PHEV, Nissan e-NV200 Combi, Nissan Leaf 2012 - 2017, Peugeot iOn, Renault Fluence, Toyota Prius, Vauxhall Ampera

# THE RANGE.

## TRAVEL & HOME.



Household Outlet **3.7kW**



**Typical charging times:**

30kWh Battery - 8.5 hours  
60kWh Battery - 16.5 hours  
90kWh Battery - 24.5 hours

## TRAVEL & HOME.





# AEC

## –105–



**Type 2 Female  
to Type 2 Male  
Extension Cable**



Audi, BMW, Hyundai, Jaguar,  
KIA, Lucid Air, Mercedes,  
Mini, Nissan Leaf 2018,  
Porsche, Range Rover P400e,  
Renault, Smart, Tesla, Toyota,  
Volkswagen, Volvo

# AEC

## –106–



**Type 2 Female  
to Type 2 Male  
Extension Cable**



Audi, BMW, Hyundai, Jaguar,  
KIA, Lucid Air, Mercedes,  
Mini, Nissan Leaf 2018,  
Porsche, Range Rover P400e,  
Renault, Smart, Tesla, Toyota,  
Volkswagen, Volvo

# AEC

## –107–



**Type 2 Female  
to Type 2 Male**



Audi, BMW, Hyundai, Jaguar,  
KIA, Lucid Air, Mercedes,  
Mini, Nissan Leaf 2018,  
Porsche, Range Rover P400e,  
Renault, Smart, Tesla, Toyota,  
Volkswagen, Volvo

# AEC

## –108–



**Type 2 Female  
to 32A Commando  
(with controller)**



Audi, BMW, Hyundai, Jaguar,  
KIA, Lucid Air, Mercedes,  
Mini, Nissan Leaf 2018,  
Porsche, Range Rover P400e,  
Renault, Smart, Tesla, Toyota,  
Volkswagen, Volvo

### Wall Box/Public Charger 7.4kW

Single  
PHASE



32  
AMP

**Typical charging times:**

30kWh Battery - 4.5 hours  
60kWh Battery - 8.5 hours  
90kWh Battery - 12.5 hours

### FAST CHARGE PUBLIC. Wall Box/Public Fast Charger 22 kW



Three  
PHASE



32  
AMP

**Typical charging times:**

30kWh Battery - 1.5 hours  
60kWh Battery - 3 hours  
90kWh Battery - 4.5 hours

## CHARGING TIMES EXPLAINED.

The logo for TTE (Truck & Trailer Equipment) features the letters 'TTE' in a bold, white, sans-serif font. The 'E' is stylized with three horizontal bars of increasing length, giving it a modern, industrial feel.

TRUCK & TRAILER EQUIPMENT

# ELECTRIC EVOLVED.

At TTE we are constantly striving  
to improve the product & service  
available to our valued customers,  
that work never stops.

**GET  
IN TOUCH**

Follow us on our social channels  
Or call us on 0121 552 3541  
or email [sales@trucktrailerequip.co.uk](mailto:sales@trucktrailerequip.co.uk)

— #Trucktrailerequip —

